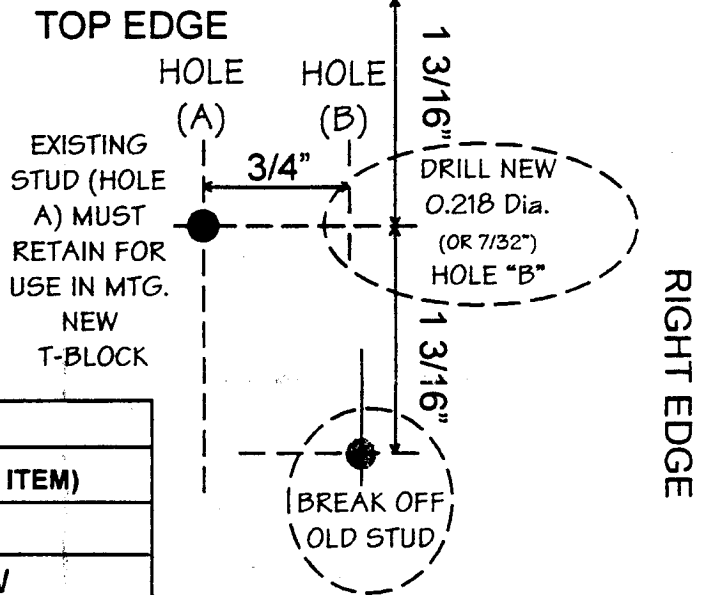


**CONTROL BOX  
DRILL TEMPLATE  
FOR MOUNTING  
NEW PN: 57465  
TERMINAL BLOCK  
IN PLACE OF OLD  
STYLE PN: 50131**

PARTS IN KIT	
1	DRILL TEMPLATE (THIS ITEM)
2	LONG HEX NUTS 8/32
1	7/8" LONG 8/32 SCREW
1	INSTRUCTION SHEET (THIS PAGE)

✂ Cut template along edges to use!



INSTALL NEW 7/8" LNG. 8/32 SCREW FURNISHED IN KIT TO MOUNT NEW TERMINAL BLOCK (HOLE A), USE (2) LONG HEX NUTS TO SECURE

